



Sidney Street, London, E1

BUTLER  STAG





**Situated in the well-maintained Wexford House, this bright and spacious three bedroom apartment presents a fantastic opportunity to take residence in the heart of Whitechapel, one of East London's most dynamic and rapidly developing areas.**



- Three Bedroom Flat
- Over 750 Sq/Ft Internal Living Space
- Private Balcony
- Separate Kitchen
- Lift Access
- Whitechapel Tube Station Close By
- Part Furnished
- Available from 27th June 2025

Ideally suited to three professional sharers, the property features a generous layout with three well-proportioned bedrooms, a living space, separate kitchen, functional bathroom and a private balcony offering some welcome outdoor space.

Located just moments from Whitechapel station (Crossrail, District, Hammersmith & City, and Overground lines), the property offers unbeatable connectivity across London. The vibrant local area includes an array of shops, cafes and restaurants, as well as proximity to the Royal London Hospital, Queen Mary University and the City.

Offered part furnished and available from 27th June 2025.

EPC Rating C  
Council Tax Band C



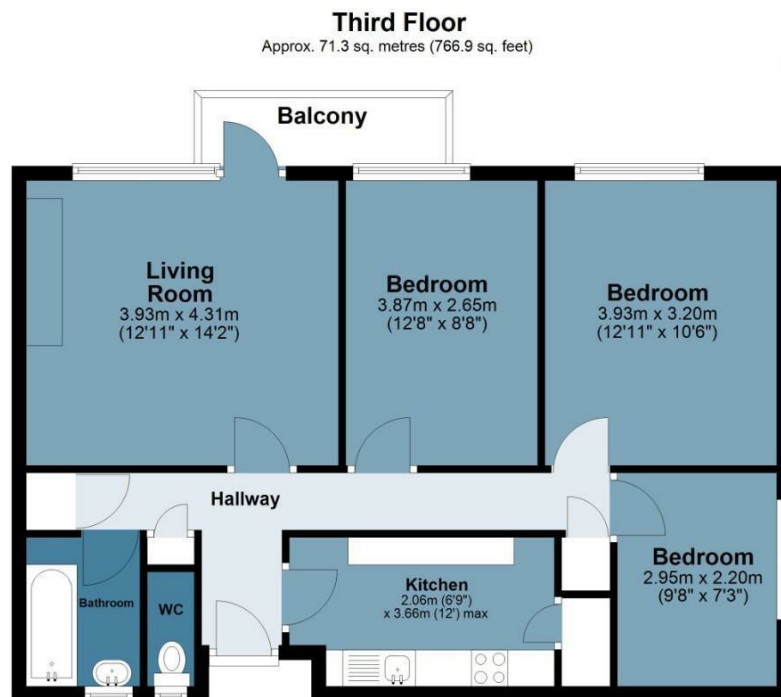




## Wexford House

Approx. Gross Internal 71.3 Area Sq M ( 766.9 Sq Ft )

BUTLER & STAG



Measurements are approximate and for illustration purposes only. While we do not doubt the accuracy and completeness, we advise you conduct a careful independent assessment of the property to determine monetary value.  
© @modephoto.uk www.modephoto.co.uk

IMPORTANT NOTICE - These particulars have been prepared in good faith and they are not intended to constitute part of an offer or contract. We have not performed a structural survey on this property and the services, appliances and specific fittings have not been tested. All photographs, measurements, floor plans and distances referred to are given as a guide and should not be relied upon.

BUTLER & STAG

☎ 020 8102 1236

🏠 508 Roman Road, Bow, London, E3 5LU

✉ bow@butlerandstag.com

[www.butlerandstag.uk](http://www.butlerandstag.uk)